

BS20

Broadband structure-borne sound und temperature sensor

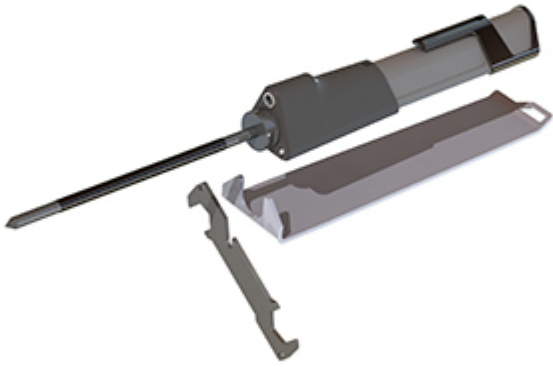
Advantages:

1. Frequency range:
20 to 100 kHz
2. Applications:
Condition
monitoring and
steam trap testing
3. Exchangeable
waveguides
4. Integrated LED
lights
5. Infrared
thermometer for
an object
temperature of -70
to +380°C

[Get A Quote](#)









THE BS20 STRUCTURE-BORNE SOUND AND TEMPERATURE SENSOR WITH ACCESSORIES FOR DIFFERENT TESTING WORK HAS BEEN SPECIALLY DESIGNED FOR THE FOLLOWING TASKS:

- Status monitoring of machines and systems
- Function checking of steam traps and valves
- Monitoring of bearing wear and malfunction
- Monitoring of lubrication conditions

FREQUENCY RANGE 20 TO 100 KHZ

Simultaneous analysis of the ultrasound frequency range between 20 to 100 kHz

INTEGRATED INFRARED TEMPERATURE SENSOR

The integrated infrared temperature sensor allows for contactless and quick recording of the test object's surface temperature. The size of the visual recording field depends on the distance between the sensor and the test object.

LED LIGHTS

The LED lights act as a torch, making it easier to connect the sensor to test points in poorly lit environments.

Accessories



SHORT WAVEGUIDE BS20-1

Accessory for structure-borne sound and temperature sensor BS20 (standard)



LONG WAVEGUIDE BS20-2

Applications: Tests on hard-to-access points



MAGNETIC WAVEGUIDE BS20-3

Applications: For connection at the test point for long-term testing and for ensuring even contact pressure



WRENCH SET

for assembling and disassembling waveguides

Technical Data

Structure-borne sound & temperature sensor

Device design

Contact sensor for detection of structure-borne ultrasound, interchangeable waveguides, contactless infrared temperature sensor, LED-light

Operating	Via keys on sensor or via SONAPHONE touchscreen Keys: start/stop measurements LED light volume
Dimensions (W x H x D)	30 x 155 x 30 mm
Weight	140 g
Temperature range	Storing temperature: -20 to +60 °C Operating temperature: -10 to +40 °C
Protection class	IP40
Frequency range	20 to 100 kHz
Temperature range	-70 to +380 °C object temperature
Resolution	Ultrasound: 1 dB Temperature: 1 K
Connector	Cable connection to SONAPHONE Length coiled cable: 160 cm
Accessories	Short Waveguide: Length: 22 mm Diameter: 18 mm Weight: 33 g Long Waveguide: Length: 150 mm Diameter: 18 mm Weight: 15 g

Downloads

Type	Title	Size
	User Documentation Structure-Borne Sound Sensor BS20	463 KB
