

---

## Short Instructions



# SONAPHONE<sup>®</sup> Firmware Update

Ultrasonic Testing Device  
for Preventive Maintenance

---

---

© SONOTEC GmbH  
All rights reserved.

The content of this operating manual is the property of SONOTEC GmbH and is protected by copyright. Duplication and distribution in any form, particularly reprinting, photographic, mechanical or electronic reproduction, or in the form of storage in data processing systems or data networks, is prohibited without the consent of the copyright holder.

---

Revision: 2.1 | 2020-11-18  
Subject to technical modifications.

## Executing a firmware update

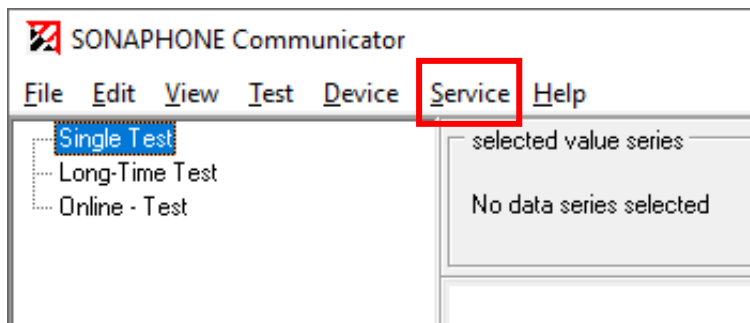
To execute successfully a firmware update on a SONAPHONE E/M please follow the steps below in sequence:

**ATTENTION**

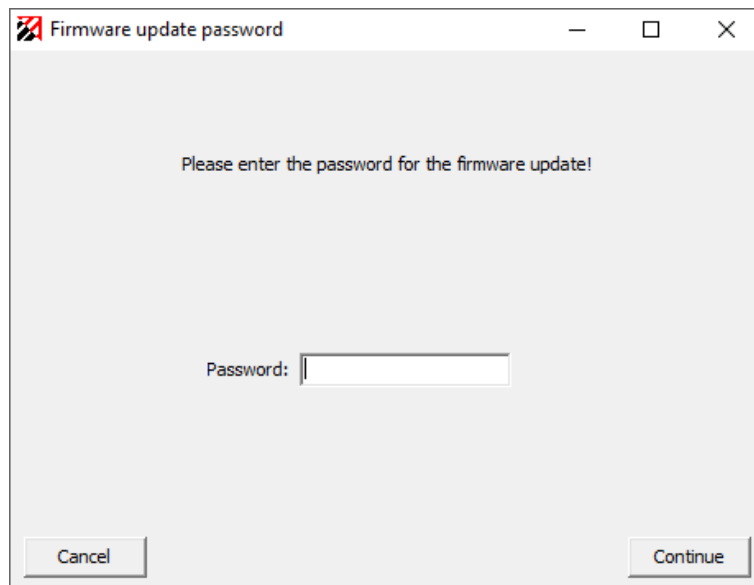
On doing a firmware update all saved data gets lost! Should you still require the data secure these before with the help of the SONAPHONE Communicator.

Ensure that the SONAPHONE or the Computer are not switched off or disconnected during the firmware update. If the firmware update cannot be successfully completed, the device has to be send to the manufacturer to recondition the functioning of the device.

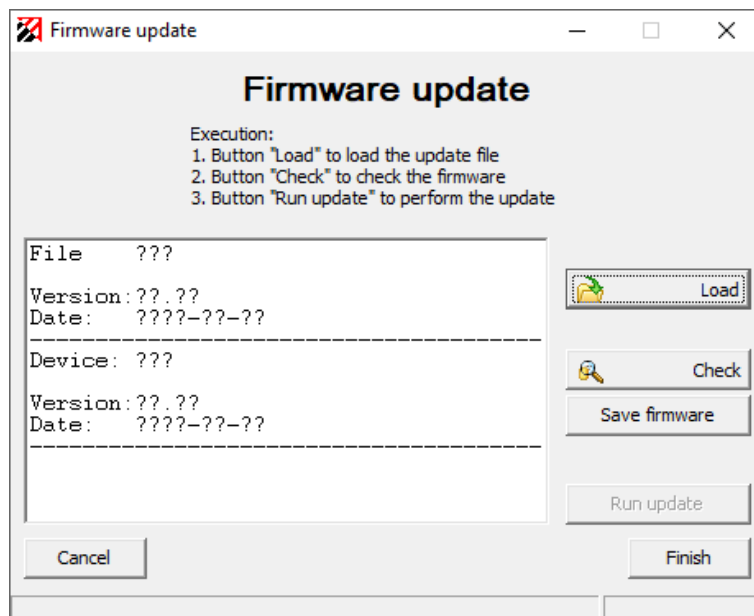
1. Connect the SONAPHONE via USB interface with a PC.
2. Start the SONAPHONE Communicator.
3. Using the keys Strg + F11 the menu item '**Service**' appears within the menu.



4. Select within the menu item **'Service'** the item **'Firmware-Update'**.

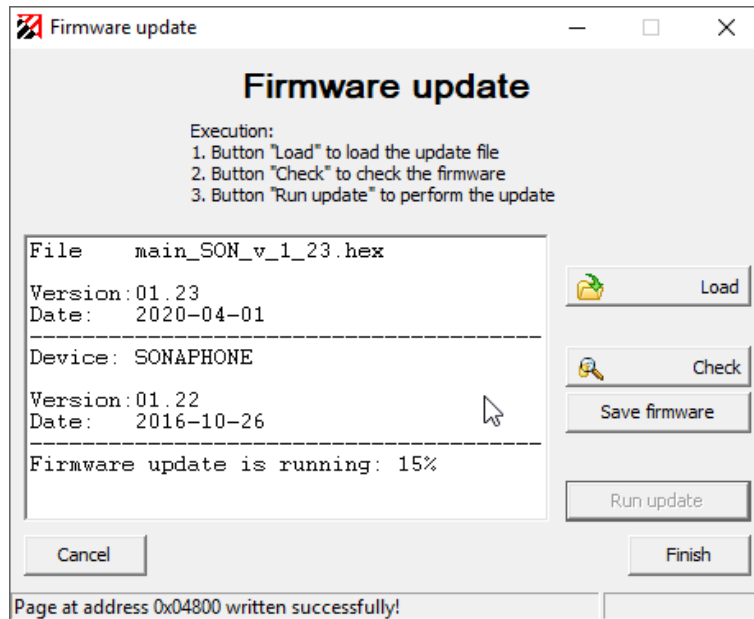


5. Enter the password **'1799'** and confirm your entering. Thereupon, the following screen is opened:



6. Press the button **<Load>** and select the firmware file (Main\_SON\_y\_x\_xx.hex).

7. After that, press the button **<Check>**. The PC software checks the current version of the firmware within the SONAPHONE, which is displayed on the screen. In case the version of the file and the device does not differ no update is necessary.
8. By pressing the button **<Execute Update>** the firmware update is getting started. Before overriding the new firmware into the SONAPHONE, it is asked to save the present firmware within the device. The program creates a \*.hex file on your hard disk. After that, the new firmware is overridden into the SONAPHONE. The current status is displayed in percentage form.



The firmware update is completed when "**Firmware update successful: 100 %**" appears on the screen. Thereupon, the window can be shut via pressing the button **<Complete>**.

The firmware update is completed successfully. The SONAPHONE should now be ready again for operation.

---

If you have any problems, please contact our service department. The contact details can be found on the last page.

---

## **MANUFACTURER**

### **Headquarters**

---

SONOTEC GmbH  
Nauendorfer Str. 2  
06112 Halle (Saale)

Phone: +49 (0)345 133 17-0  
Fax: +49 (0)345 133 17-99

Email: [mySONAPHONE@sonotec.de](mailto:mySONAPHONE@sonotec.de)  
Internet: [www.sonotec.de](http://www.sonotec.de)

---

### **USA contact details**

---

SONOTEC US Inc.  
190 Blydenburgh Rd  
Suite 8, 2nd Floor

Phone: +1 631/415 4758

Email: [sales@sonotecusa.com](mailto:sales@sonotecusa.com)  
Internet: [www.sonotecusa.com](http://www.sonotecusa.com)

---

---